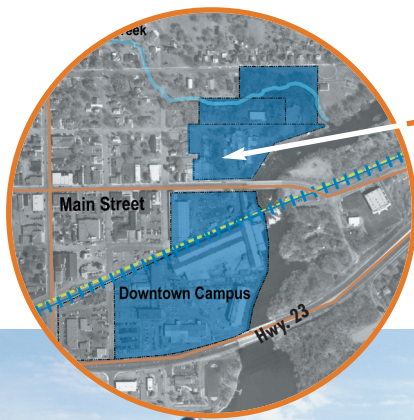


The residential development on the Downtown Campus site is within walking distance of most of the downtown, and is still in an area removed from the traffic and activity that occurs around commercial areas. The parcels are adjacent to both the Sauk River and Brewery Creek, and are protected by existing stands of mature trees. Residents will be able to easily walk to adjacent offices and retail businesses. They will also be able to use the riverfront boardwalk to access the remaining downtown campus and adjoining parks.



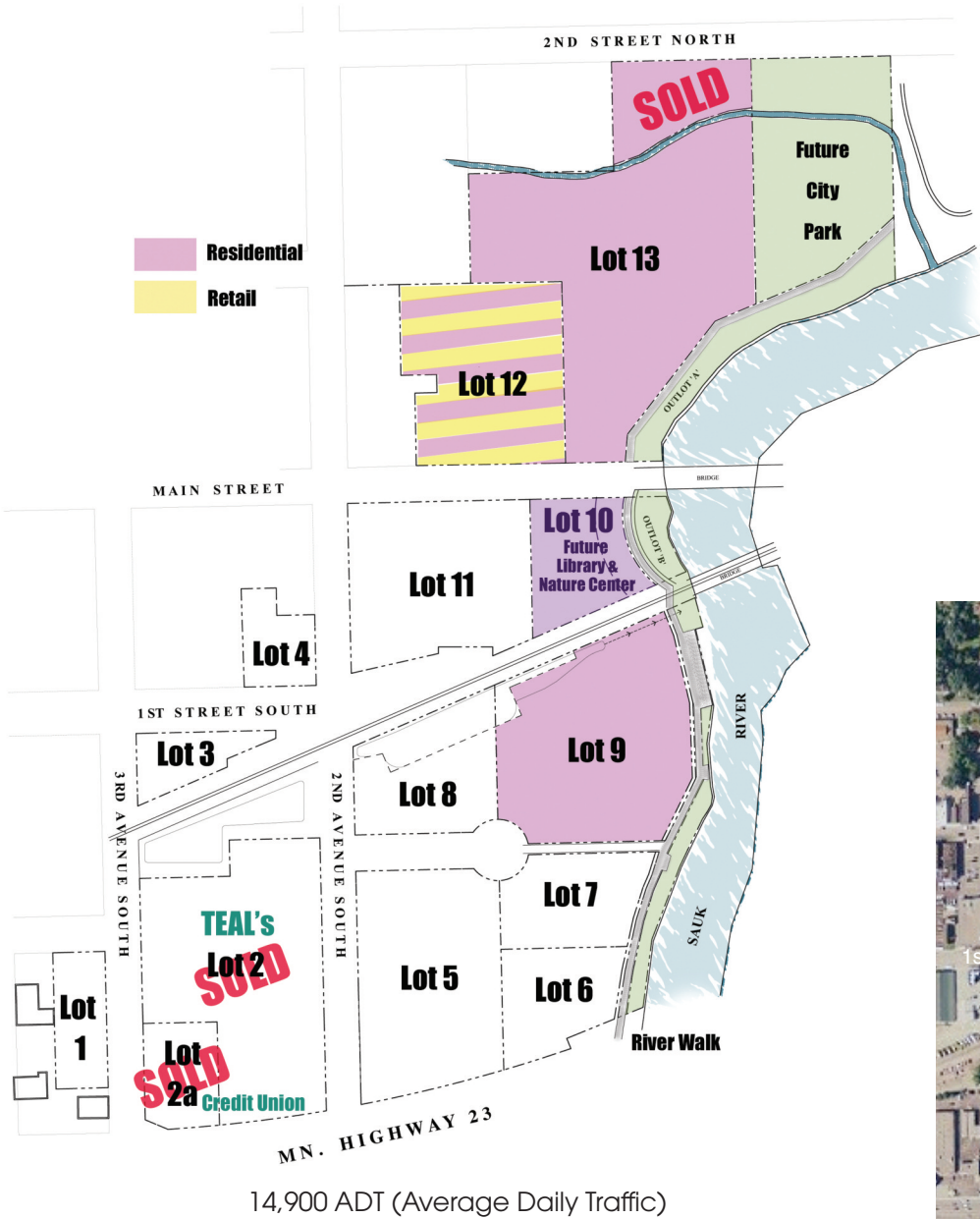
**Downtown Campus  
Residential Site**

## Residential Site Attributes

- **Acreage** — 28 acres
- **Zoning** — *Riverfront Residential*
- **Potential Uses** — *Townhouses, Residential Lofts, Residential Mixed Use (Senior Housing)*
- **Utilities** — *All Utilities will be in Place*



**Sauk River Waterfront**



## Residential Property

- Lot 9 — 115,639 sf
- Lot 13 — 192,139 sf

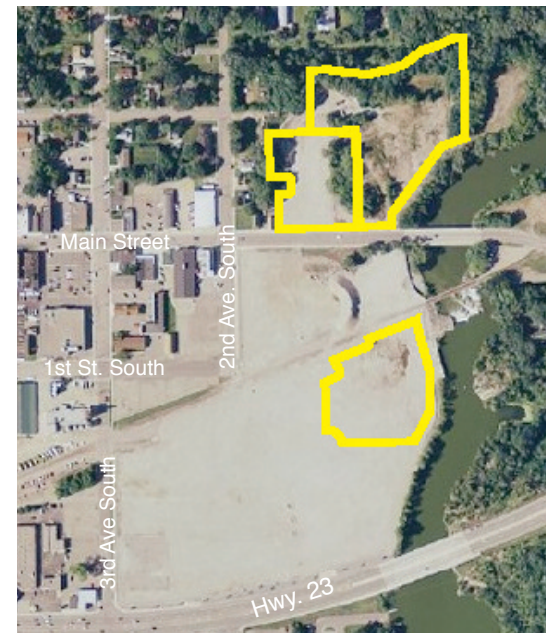
## Retail/Residential

- Lot 12 — 91,231 sf

## Potential Uses

- Residential, Retail, Mixed Use

Aerial View of Granite Landing



View looking up to Proposed City Park



River Edge is Wooded



View of Residential Site from Main Street



Existing Mature Woods